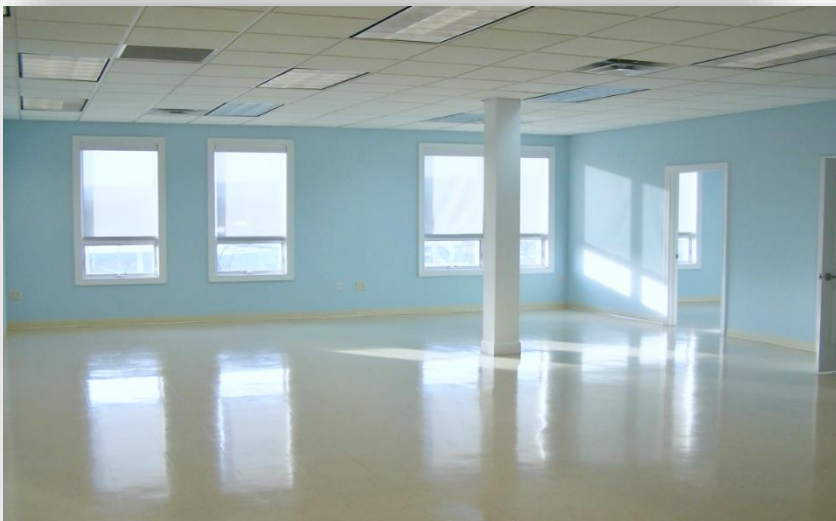


# Stony Pointe



105 Stony Pointe Way S#223  
Strasburg, Virginia 22657



## **SUITE #223:**

2,088 sq.ft Finished Space  
Reception/Open Work Space  
3 Large Offices  
Conference Room  
Private & Corridor Bathrooms  
Built-In Cabinetry/Sink Area  
Storage Room

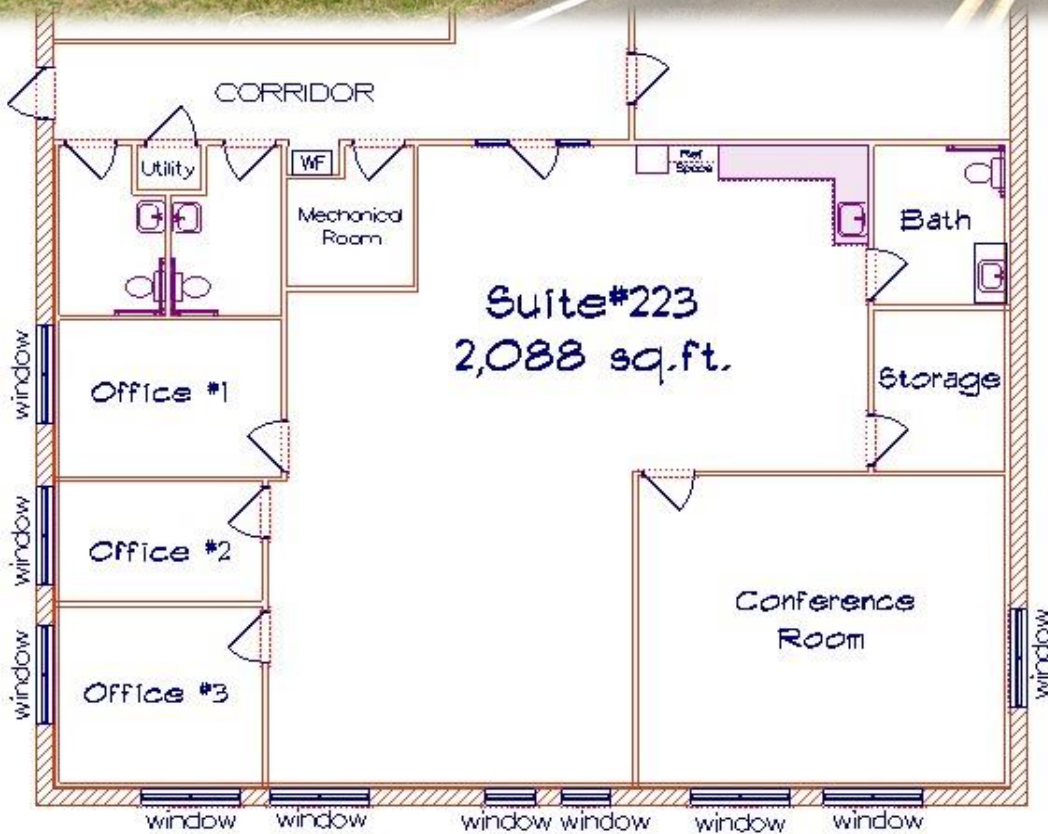
Base Rent \$2,088.00 (\$12.00 psf)  
CAM \$845.80  
Monthly \$2,933.80

Included in CAM:  
Suite Utilities: Electric, Gas, and  
W/S; Maintenance of HVAC and  
Corridor Restrooms

## Toothman

INVESTMENTS LLC

Post Office Box 145  
Woodstock, Virginia 22664  
540-459-4099  
[info@alantoothman.com](mailto:info@alantoothman.com)



Premier Class A Construction  
Modern & Efficient Building  
Building Size – 28,800 sq.ft.  
Tenants: Office, Medical,  
& Service Tenants  
Full ADA Accessibility  
Ample Parking  
Great Visibility  
High Traffic Location

